

■ **Walt Disney's Comics and Stories – Vol. 16 No. 12**
(September 1954)

Evaluation Date: April 1, 2026



SUMMARY OF OBSERVATIONS

This comic retains the front cover, back cover, centerfold, all photographed interior pages, and both original staples. Interior paper shows relatively light cream-to-tan coloration for the period, and printed colors across multiple interior pages remain strong and visually clear. The book presents as visually appealing overall.

Condition issues are primarily concentrated at the **spine**, where **repeated vertical cracking and localized paper loss** are present, and at the **staple locations**, where **oxidation of the metal staples** is visible. Despite this wear, all pages remain attached, the centerfold is secure, and the paper retains flexibility under the brittleness test. The observations below describe each area in detail based strictly on what is visible in the uploaded photographs.

FRONT COVER — OBSERVATIONS

Walt Disney's Comics and Stories – Vol. 16 No. 12 (September 1954)

Photo Condition & Quality:

The photograph clearly shows the entire front cover, including the spine edge, open edge, top and bottom edges, and all four corners. Lighting is even, and surface texture, cracks, and color fields are clearly visible.

Observations:

The front cover displays **strong color saturation**, particularly in the yellow masthead field and the surrounding red and green background areas. Ink coverage appears even, and printed outlines remain sharp. The main condition issues are concentrated along the **spine edge**, where multiple **vertical stress cracks** run perpendicular to the fold. These cracks vary in severity: some appear as fine hairline separations in the cover stock, while others widen enough to expose lighter underlying paper fibers.

In the **mid-to-lower spine region**, several **small areas of paper loss** are visible where the cover stock has flaked away entirely. These losses are irregular in shape and limited in size but penetrate through the surface layer, creating small gaps along the fold. Between these loss points, the spine edge shows abrasion and color thinning, consistent with repeated handling.

The **bottom edge** of the cover shows light edge wear without full-thickness tearing. The **lower spine-side corner** exhibits more pronounced rounding and blunting than the other corners, suggesting concentrated handling at that point. The remaining corners show moderate rounding but retain their original shape without material loss. No large diagonal creases or folds interrupt the cover artwork outside the spine-related damage.

Overall Impression:

The front cover remains firmly attached and visually attractive, with bold color and intact artwork. **Spine-related cracking and localized paper loss** are the dominant defects and represent the primary exterior condition limitations.

BACK COVER — OBSERVATIONS

Walt Disney's Comics and Stories – Vol. 16 No. 12 (September 1954)

Photo Condition & Quality:

The back cover image shows the full advertisement page with all edges and corners visible. Printed elements and surface texture are clearly resolved.





Observations:

Interior pages display **cream to light-tan paper tone**, relatively light for a 1954 Dell comic. Color reproduction across story panels remains strong, with blues, reds, and greens retaining clarity and contrast. Black linework appears crisp and well defined.

Several pages exhibit **slight natural waviness** along the bottom margins, affecting short segments and not forming sharp creases. This waviness does not correspond with moisture damage and appears consistent with age and paper characteristics. Small **corner bends** are visible at some lower outer corners, shallow in depth and not extending into panel art or text. No full-thickness tears, stains, writing, or ink transfer are visible on the photographed pages.

Overall Impression:

Interior pages are **complete, clean, and visually strong**, with only light handling wear and age-related paper characteristics.

CENTERFOLD — OBSERVATIONS

Walt Disney's Comics and Stories – Vol. 16 No. 12 (September 1954)

Photo Condition & Quality:

The centerfold image shows both pages, the central fold line, and both staple locations under even lighting.



Observations:

Both original staples pass through the centerfold. The fold line shows **mild compression** consistent with normal reading and handling. The paper along the fold remains continuous, with no visible tearing, splitting, or missing material.

Staple perforations remain **close to their original size**, with no obvious enlargement or distortion beyond light compression. The surrounding paper shows uniform toning, and no rust staining or discoloration is visible extending outward from the staple locations.

Overall Impression:

The centerfold remains **securely attached and structurally intact**, with minimal fold wear.

SPINE — OBSERVATIONS

Walt Disney's Comics and Stories – Vol. 16 No. 12 (September 1954)

Photo Condition & Quality:

Close-range images show the full length of the spine with sufficient clarity to assess cracking, abrasion, and paper loss.

**Observations:**

The spine exhibits **multiple vertical cracks** running perpendicular to the fold. These cracks vary in width and depth, with some limited to surface separation and others penetrating through the cover stock. At several points, **small patches of paper loss** expose lighter interior fibers, creating uneven gaps along the fold.

These losses and cracks are **intermittent**, not continuous, and are most prominent near the middle and lower sections of the spine. Despite this wear, the spine remains continuous overall, with no complete splits or separations observed. The curvature of the spine remains relatively straight, without pronounced rolling.

Overall Impression:

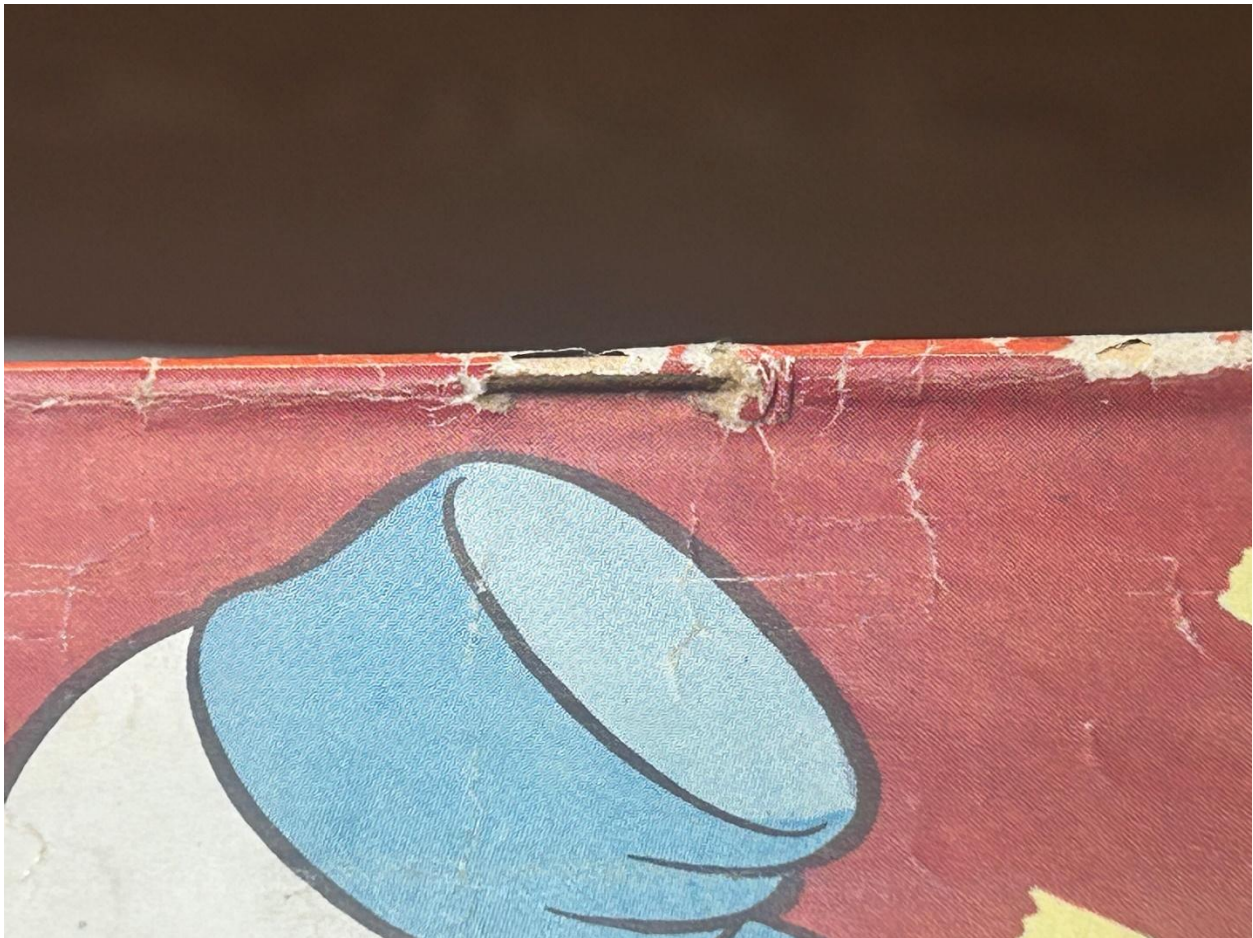
The spine shows **moderate structural wear**, characterized by cracking and localized paper loss, but continues to hold the book together securely.

UPPER STAPLE — OBSERVATIONS

Walt Disney's Comics and Stories – Vol. 16 No. 12 (September 1954)

Photo Condition & Quality:

Macro image clearly shows the upper staple and surrounding paper fibers.

**Observations:**

The upper staple displays **visible oxidation**, with darkened metal and uneven coloration across the staple surface. The surrounding paper shows **localized discoloration** directly beneath the staple crown. No tearing or slot enlargement radiates outward from the staple location.

Overall Impression:

The upper staple remains functional, with **oxidation present but limited adjacent paper disturbance**.

LOWER STAPLE — OBSERVATIONS

Walt Disney's Comics and Stories – Vol. 16 No. 12 (September 1954)

Photo Condition & Quality:

Macro image shows the lower staple and adjacent paper clearly.



Observations:

The lower staple exhibits oxidation similar in appearance to the upper staple. The surrounding paper remains intact, with no visible tearing, splitting, or enlargement of the staple perforation.

Overall Impression:

The lower staple remains functional, with **oxidation visible but no structural compromise observed.**

BRITTLENESS TEST — OBSERVATIONS

Walt Disney's Comics and Stories – Vol. 16 No. 12 (September 1954)

Photo Condition & Quality:

The image shows a page corner flexed outward, with fibers clearly visible.



Observations:

The tested page corner flexes without audible cracking. The bend forms smoothly without fiber separation, and no flaking or splitting is visible along the bend line. After release, the page partially rebounds toward flat, indicating retained flexibility.

Overall Impression:

The paper is **not brittle** and retains sufficient flexibility for careful handling.